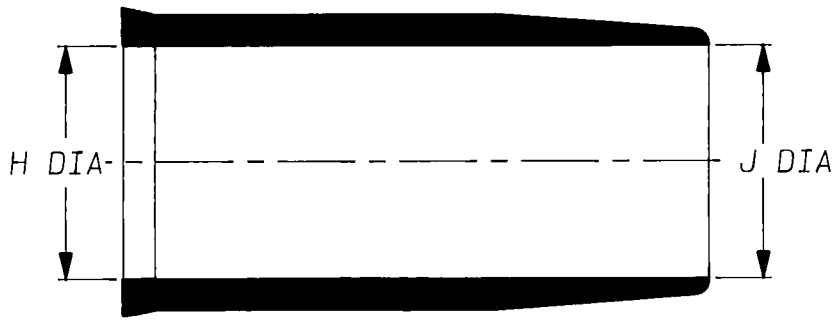
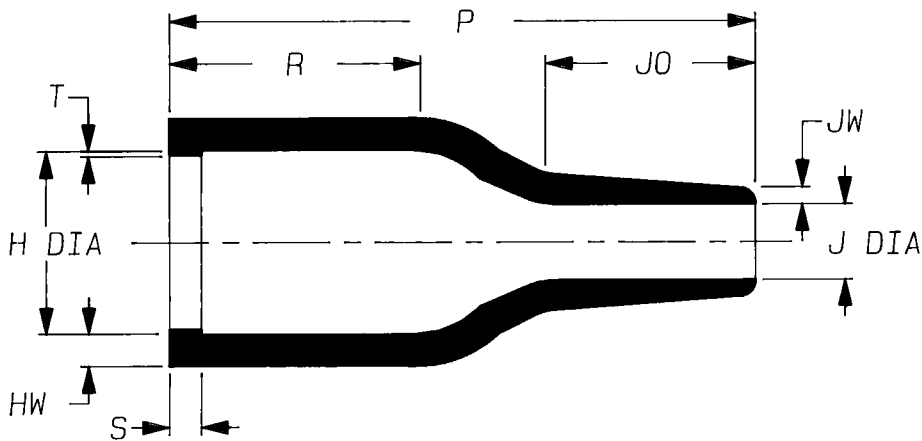


a) PART AS SUPPLIED.

202W203-X-G01



b) PART AFTER UNRESTRICTED RECOVERY.



DIMENSIONS (in millimetres).

PART No.	H	J	P	R	S	T	JO	HW	JW
	+2.5 -0 a	+2.5 -0 a	±5% b	±5% b	±10% b	±10% b	±10% b	±20% b	±20% b
202W203	26 18	26 7.0	55 23	3.0	0.5	20	3.0	1.5	

Copyright (!)
Urheberrechte

The copyright in this drawing is the property of Raychem Ltd. The drawing is issued on condition that it is not copied, reproduced or disclosed to a third party, either in whole or in part without the prior written consent of Raychem Ltd.

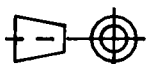
Drawn A.LILLEY. Checked *sk* Issue 1 Date MAY 1989

Conforms to ISO Recommendations
3rd Angle Projection
Not to Scale

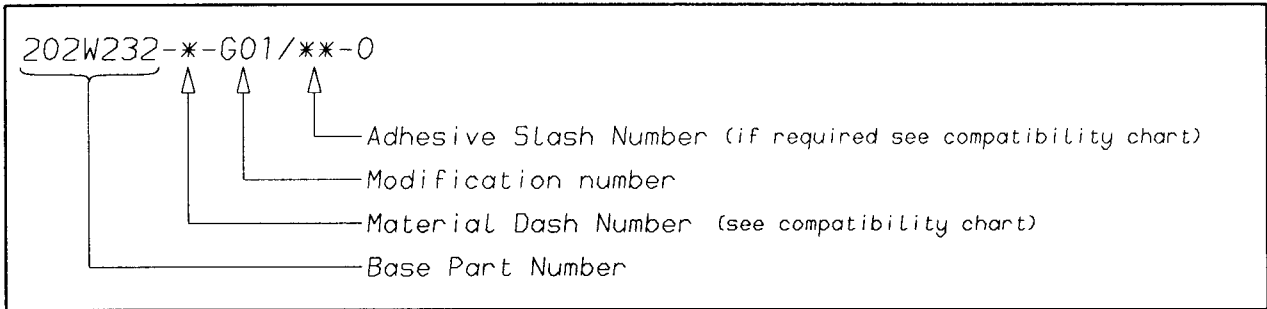
Approval
Design

MKT6
[Signature]

G.C.
[Signature]



Ordering Information



COMPATIBILITY CHART

MATERIAL DASH NUMBER	MATERIAL DESCRIPTION	COATING SLASH NUMBER
-3	POLYOLEFIN, SEMI-RIGID	/42, /86
-4	POLYOLEFIN, FLEXIBLE	/42, /86
-25	ELASTOMER, FLUID RESISTANT	/86, /225

AS SUPPLIED DIMENSIONS ARE FOR UNCOATED PARTS,
WHEN COATING IS ADDED, ENTRY DIAMETERS WILL REDUCE BY 1.5mm MAX.